

Hospital_Name

Nova report created: 10/20/04, 16:40:37

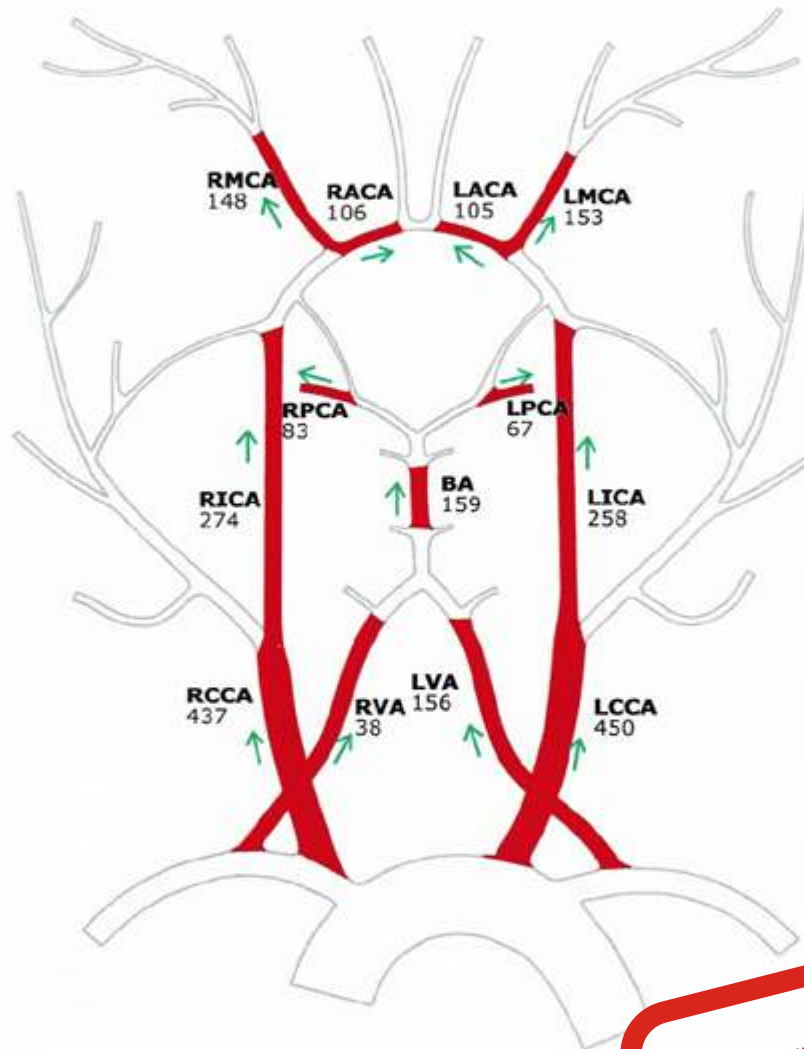
Patient: G Volunteer5

Study Date: 05/14/04, 10:01:14

ID: Research Baseline

Protocol: Gated head and neck

Volumetric Flow Rate (ml/min)



Sample of
Volumetric Flow
Rate page

Radiologist:

Signature:

Hospital_Name

Nova report created: 10/20/04, 16:40:38

Patient: G Volunteer5

Study Date: 05/14/04, 10:01:14

ID: Research Baseline

Protocol: Gated head and neck

vessel	flow (mL/min)	range * (mL/min)	direction
LCCA	450	300 - 550	↑
RCCA	437	310 - 570	↑
LVA	156	80 - 170	↑
RVA	38	80 - 170	↑
LICA	258	190 - 340	↑
RICA	274	180 - 310	↑
BA	159	160 - 260	↑
LMCA	153	110 - 210	↑
RMCA	148	100 - 200	↑
LACA	105	60 - 170	↑
RACA	106	60 - 160	↑
LPCA	67	50 - 100	↑
RPCA	83	50 - 100	↑

* Standard flow values, provided for reference only, are based on research conducted at the Dept. of Neurosurgery, University of Illinois at Chicago. Specific citations to authorities are available upon request at VasSol, Inc.

Sample of flow
baseline table
page

Radiologist:

Hospital_Name

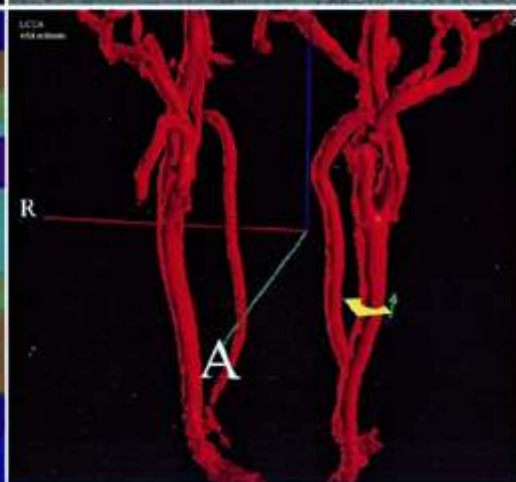
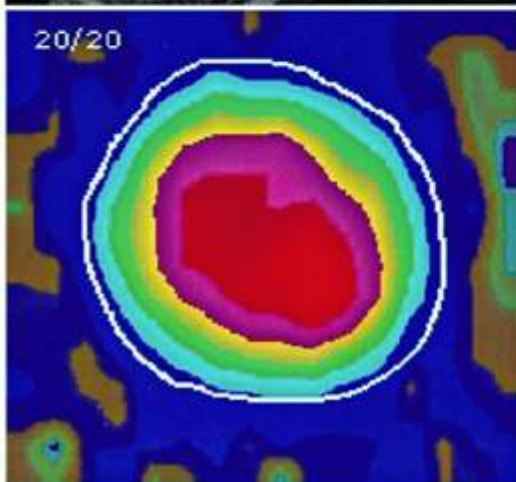
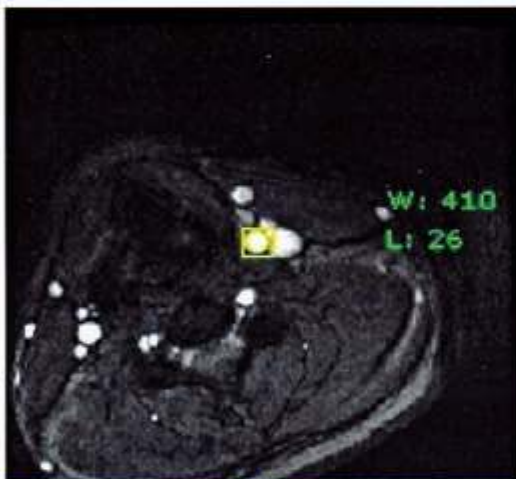
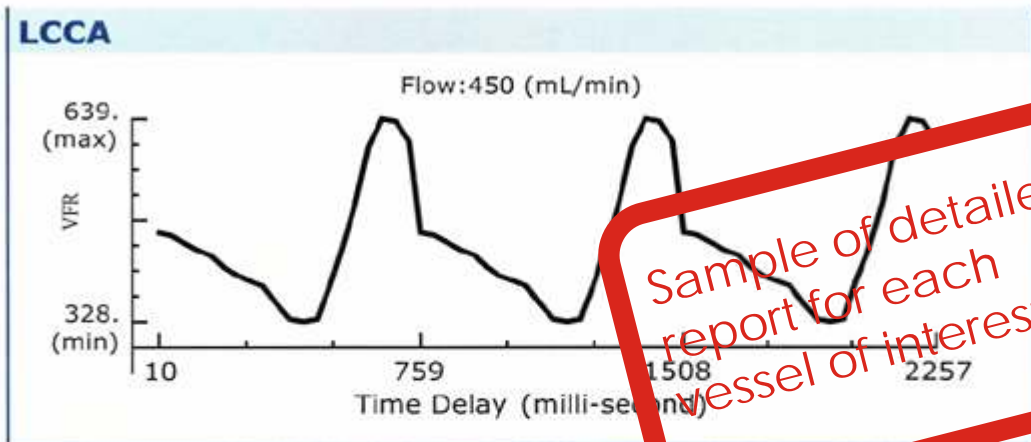
Nova report created: 10/20/04, 16:40:38

Patient: G Volunteer5

Study Date: 05/14/04, 10:01:14

ID: Research Baseline

Protocol: Gated head and neck



Radiologist: